



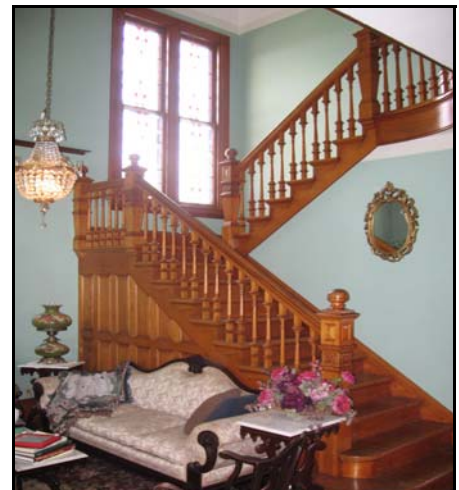
**Jennifer Oby**  
**214 West Maple**  
**West Union**  
**Reduced to \$209,000**

***The Butler House  
 Bed & Breakfast***

Historic home with original architectural details still in place. Grand foyer with stained glass, massive original woodwork, elaborate oak staircase and tooled leather. This home boasts 3,800 sq.ft. and features 5 bedrooms, 4 1/2 updated baths, modern kitchen with newer appliances, plus a family room with gas fireplace insert. The lower level is complete with kitchen and bath for a long term renter. Newly sided and insulated plus new energy efficient windows; newer furnace and air conditioner.

<b>STYLE</b>	2 story frame	<b>BEDROOMS</b>	5 (1 down; 4 up)
<b>BUILT IN</b>	1891	<b>BATH</b>	4 1/2 (1 1/2 down; 3 up)
<b>SQ. FT.</b>	3,320	<b>LAUNDRY</b>	Basement
<b>TAXES</b>	\$1,716/yr net	<b>RAMP</b>	Handicapped accessible
<b>LOT SIZE</b>	100' x 120'	<b>DRIVEWAY</b>	Gravel
<b>SCHOOL DIST.</b>	North Fayette	<b>FIREPLACE</b>	Yes, gas
<b>ROOF TYPE</b>	Asphalt; new	<b>A/C</b>	Central
<b>EXTERIOR</b>	Wood lap	<b>HEAT</b>	F/H gas
<b>INTERIOR WALLS</b>	Sheetrock/plaster	<b>GARAGE</b>	2 car basement
<b>SUMP PUMP</b>	Yes	<b>W. HEATER</b>	Gas
<b>BASEMENT</b>	Full; partially finished	<b>WATER/SEWER</b>	City

**Northeast Iowa Realty & Appraisal, Inc.**  
 115 South Vine Street  
 West Union, IA 52175  
 563-422-3285  
 www.northeastiowarealty.com  
 Leanne Cline 563)920-3055  
 leannecline@northeastiowarealty.com



*This information was obtained from sources deemed reliable but is not guaranteed by the listing broker.*